

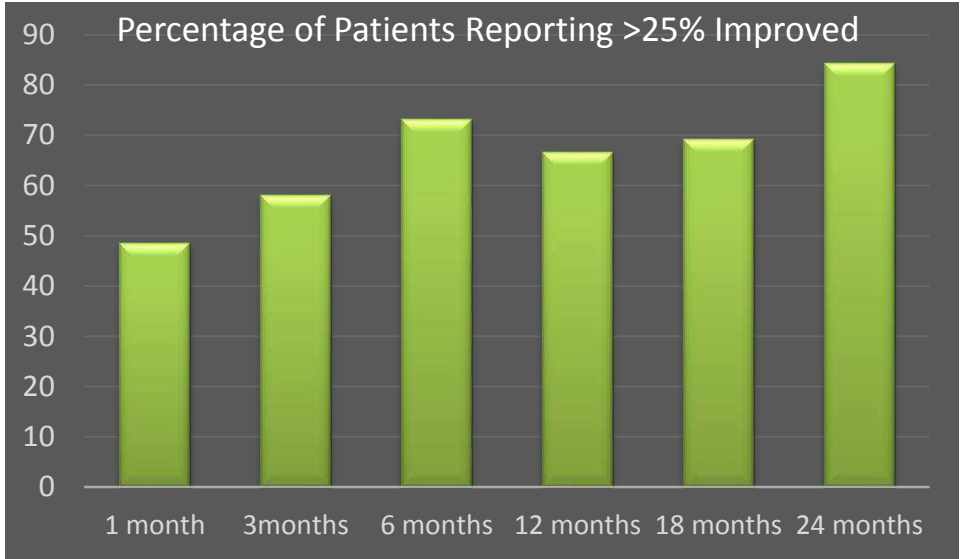
**What's important here?** The patient results detailed on this infographic are almost evenly split between older men and women who are slightly overweight (BMI>25).

## Patient Demographics

Regenexx-AD	
N	221 patients
Male	120 (54.3%)
Female	101 (45.7%)
Age	59.9 (21-85)
Height	67.5"(59-81)
Weight	175.6 (118-300) lbs.
BMI	27 (19.5-44.3)

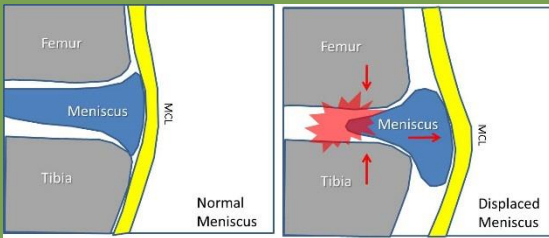
**Caution!** This is registry data, which is not the same as a controlled trial. This means it was collected as patients were treated.

Knee Arthritis



**What do these two graphs mean?** The graph above represents the percentage of patients who reported >25% relief at various time points after the procedure. For example, at 12 months almost 67% of patients who responded to our outcome questionnaires reported more than 25% relief. For the graph below, this is the mean reported relief at these same time points. For example, patients at 18 months may have reported anything from no relief, to 50% relief, to 90% relief and the mean of all of those reports was 55% improved.

Note that this dataset is specific to those patients who had arthritis with an obviously displaced meniscus on MRI. A displaced meniscus means one that has migrated outside of the joint, reducing it's effectiveness as a spacer and shock absorber for the knee. This is very common post surgery, where parts of the meniscus are removed. The main difference between this Regenexx-AD procedure and the Regenexx-SD is that the former uses both bone marrow stem cells in the main knee joint as well as fat cells to buttress the displaced meniscus (in hopes of stabilizing it's migration out of the joint).



Regenexx-AD is a same day stem cell procedure that includes both bone marrow and fat cells.

For demographics, n for age calculation was 220, for BMI 198, for weight 198, for height 198. For the graph above, left y-axis is % Likert Improvement from -100% to +100%. N's were 51 at 1 mo, 47 at 3 mo, 49 at 6 mo, 34 at 1 yr, 18 at 18 mo, 16 at 2 yrs. For the graph below, left y-axis is % Likert Improvement from -100% to +100%. Patient n's for each time point are 1 month-105, 3 months 81, 6 months 67, 12 months 51, 18 months 26, 24 months 19.