

**What's important here?** The patient results detailed on this infographic are mostly men who are middle aged and only slightly overweight (BMI>25).

## Patient Demographics

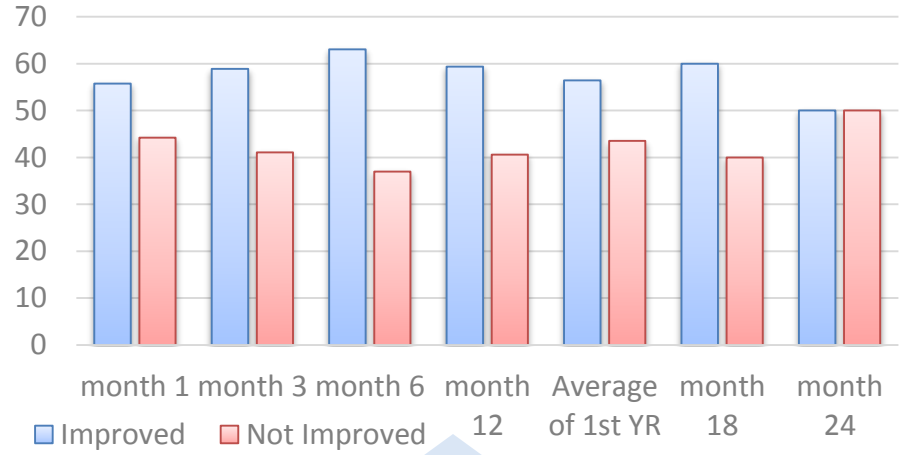
|        | Regenexx-SD      |
|--------|------------------|
| N      | 200 patients     |
| Male   | 113 (56.5%)      |
| Female | 87 (43.5%)       |
| Age    | 56.3 (22-85)     |
| BMI    | 26.1 (17.4-39.5) |

**Caution!** This is registry data, which is not the same as a controlled trial. This means it was collected as patients were treated.

Hip Arthritis



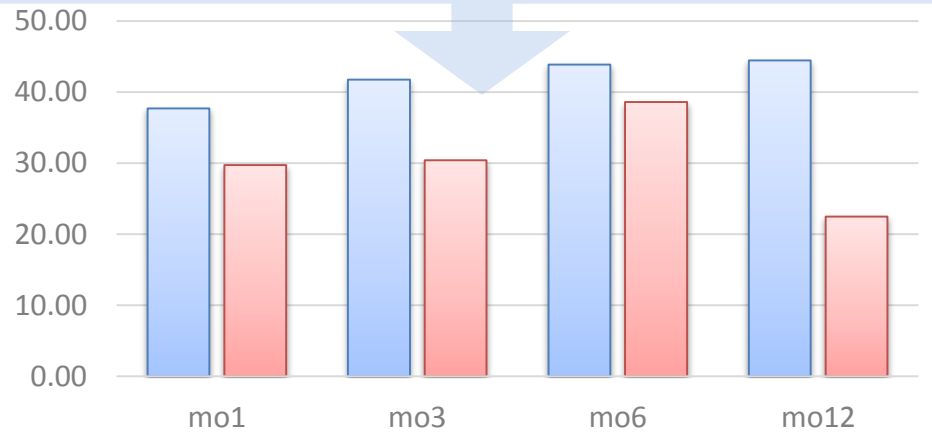
## % of All Patients Reporting >25% Improvement



This data analysis is part of the fall 2013 data download of patients who were tracked in our advanced registry. Of note, we have noticed for many years that hips with arthritis generally under-perform knees for stem cell treatment outcomes. Analysis of our 2013 data shows that this may be an age effect, in that multiple types of data cut-offs for age showed that patients over age 55 under-performed younger patients. In addition, [other studies have shown that the native stem cells in hips aren't as robust as those in knees](#). In general, while this data shows reasonable outcomes (i.e. about 60% of hip patients reporting some improvement by 3-12 months); to date, our data on cultured stem cells used in hip joints demonstrated better results than the same day procedure.

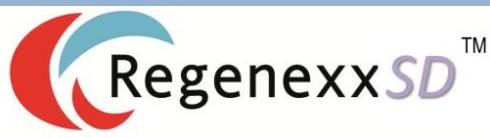
- [More data on the outcome of Regenexx-SD hip and knee procedures compared to joint replacements using different metrics \(KSS and Harris Hip Score\)](#)

**What do these two graphs mean?** The graph above represents the percentage of patients who reported >25% relief at various time points after the procedure. For example, at 12 months about 60% of patients reported more than 25% relief. For the graph below, this is the mean reported relief at these same time points broken out by age. For example, patients at 12 months may have reported anything from no relief, to 50% relief, to 90% relief the mean of all of those reports was 44% improved if you were younger than age 55 and 22% if you were older than 55.



**Mean Improvement of All Patients with Age Considered** ■ <55 ■ >55

For demographics, n for age calculation was 200, for BMI 169. For the graph above n's were 62 at 1 mo, 56 at 3 mo, 46 at 6 mo, 22 at 1 yr, 15 at 18 mo, 8 at 24 mo. For the graph below, left y-axis is % Likert Improvement from -100% to +100%. Patient n's for each time point are 1 month-52, 3 months 71, 6 months 58, 12 months 39.



Regenexx-SD is a same day stem cell procedure where cells are harvested in the morning and placed back in the afternoon.