

What's important here? The patient results detailed on this infographic are mostly men who are middle aged and only slightly overweight (BMI>25).

Patient Demographics

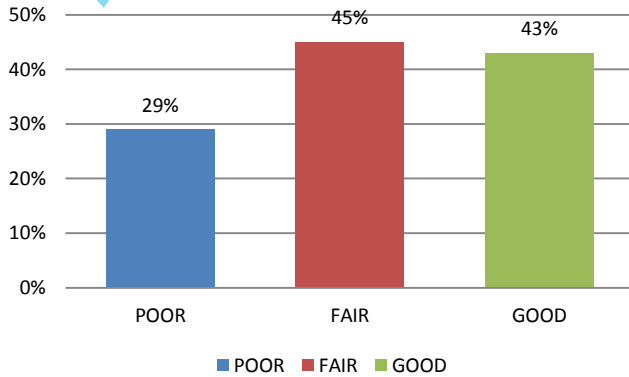
	Regenexx-SD
N	184 patients
Male	134 (73%)
Female	50 (27%)
Age	52 (19-83)
Height	69" (60-80)
Weight	174 (100-295) lbs.
BMI	25.5 (17.5-39.8)

Knee Arthritis

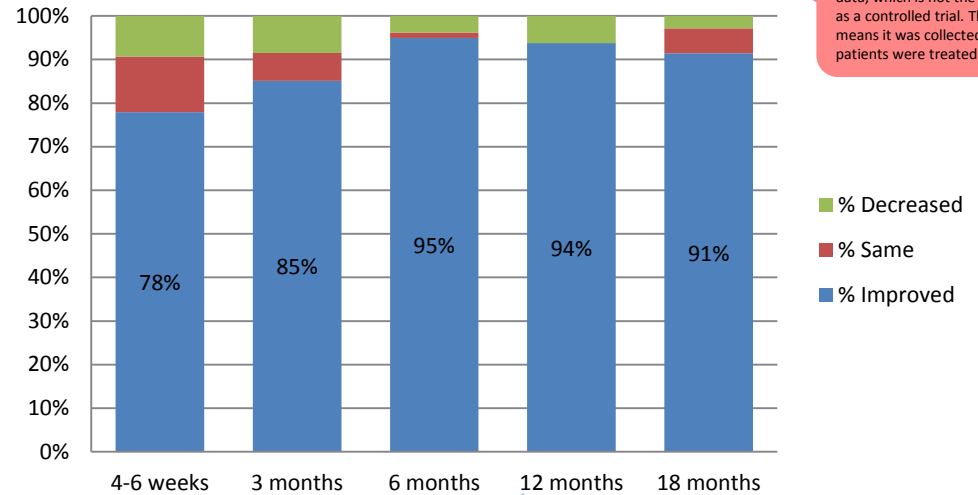


What's interesting here? There was little difference in reported outcome between our pre-procedure grade Fair and Good for the same day procedure. However, unlike Regenexx-C, more severe arthritis patients had a worse outcome (Poor Candidates).

SD % Improvement by Candidacy Grade



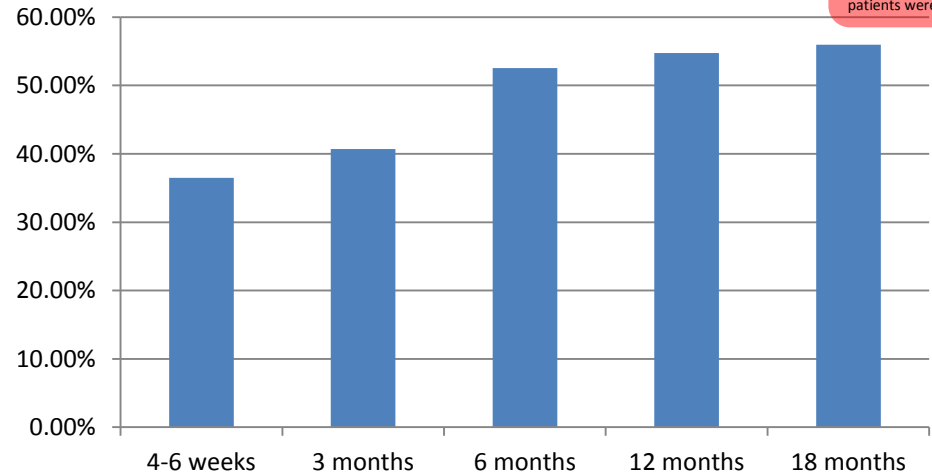
SD Improvement from Baseline



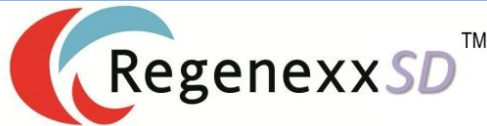
Caution! This is registry data, which is not the same as a controlled trial. This means it was collected as patients were treated.

What do these two graphs mean? The graph above represents patient relief at various time points after the procedure. For this graph, the blue represents any improvement reported by the patient (0-100% relief). For example, at 6 months this means that 95% of the patients reported some relief. For the graph below, this is the mean reported relief at these same time points. For example, patients at 6 months may have reported anything from no relief, to 50% relief, to 90% relief and this is the weighted average (mean) of all of those reports.

SD Mean % Improvement



Caution! This is registry data, which is not the same as a controlled trial. This means it was collected as patients were treated.



Regenexx-SD is a same day stem cell procedure where cells are harvested in the morning and placed back in the afternoon.

For both graphs above: N=86 at 4-6 weeks (47% reporting), n=47 at 3 mo (29% reporting), 79 at 6 mo (55% reporting), n=48 at 12 mo (55% reporting), n=35 at 18 mo (58% reporting). For example, 55% reporting means that only about half of the patients treated answered our questionnaires.