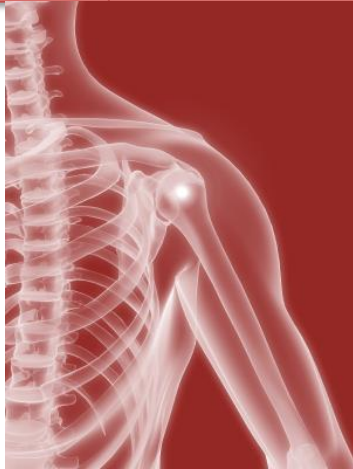


# Shoulder

## Patient Demographics

Regenexx-SD	
N	107 patients
Male	74 (69.2%)
Female	33 (30.8%)
Age	56.6 (22-91)
BMI	25.8 (18.5-36)



**What's important here?** The patient results detailed on this infographic are mostly men who are middle aged and about normal weight.

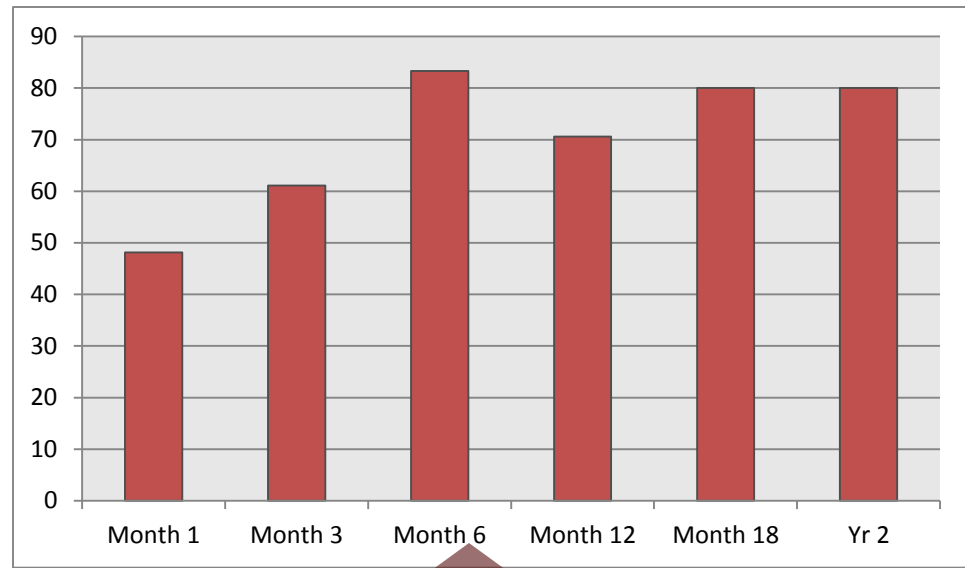
**Caution!** This is registry data, which is not the same as a controlled trial. This means it was collected as patients were treated.

This data analysis is part of the 2013 download of patient results tracked in our advanced treatment registry. The shoulder patients shown here have a collection of problems including arthritis, rotator cuff tears, labral tears, and/or ligament problems. For a sub-analysis that excludes patients with shoulder arthritis and is more focused on rotator cuff tears, [click here](#).



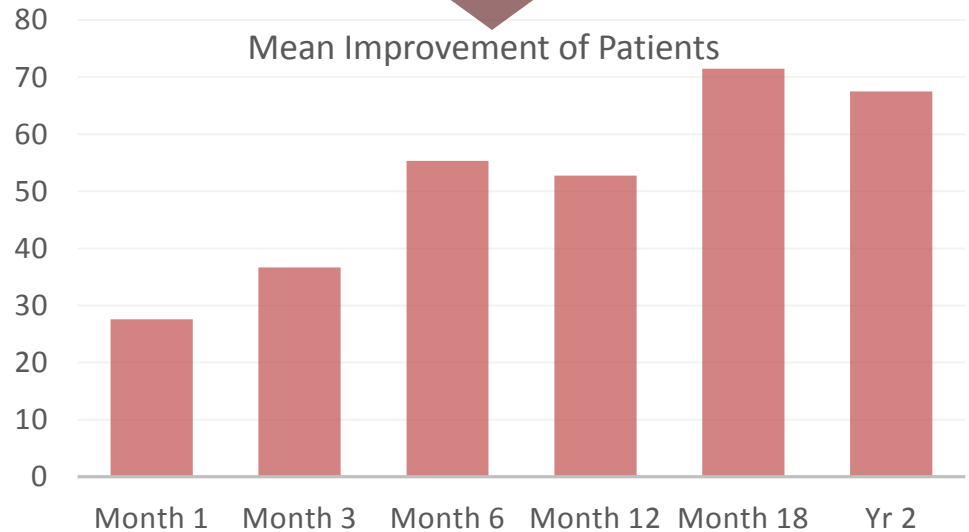
Regenexx-SD is a same day stem cell procedure where cells are harvested in the morning and placed back in the afternoon.

## Percentage of Patients Reporting >25% Improvement



**What do these two graphs mean?** The graph above represents the percentage of patients who reported >25% relief at various time points after the procedure. For example, at 12 months almost 70% of patients who responded reported more than 25% relief. For the graph below, this is the mean reported relief at these same time points. For example, patients at 12 months may have reported anything from no relief, to 50% relief, to 90% relief the mean of all of those reports was 53% improved.

## Mean Improvement of Patients



For demographics, n for age calculation was 107, for BMI 86. For the graph below n's were 27 at 1 mo, 36 at 3 mo, 36 at 6 mo, 17 at 1 yr, 10 at 18 mo, 10 a 2 yrs. Left y-axis is % Likert Improvement from -100% to +100%. For the graph above, Patient n's for each time point are 1 month-27, 3 months 36, 6 months 36, 12 months 17, 18 months 10, 24 months 10.