

What's important here? The patient results detailed on this infographic are mostly men who are middle aged and only slightly overweight (BMI>25).

Patient Demographics

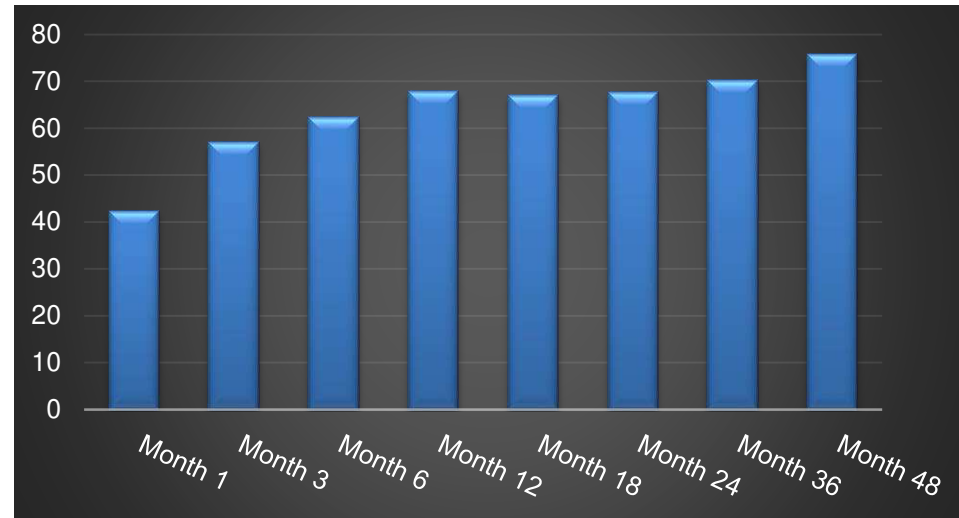
	Regenexx-SD
N	1825 procedures
Male	1034 (56.6%)
Female	792 (43.4%)
Age	57.2 (13-92)
Height	68" (49-79)
Weight	181 (100-350) lbs.
BMI	27.6 (15.8-55.8)

Caution! This is registry data, which is not the same as a controlled trial. This means it was collected as patients were treated.

Knee Arthritis



Percentage of Patients Reporting ≥50% Improvement



What do these two graphs mean? The graph above represents the percentage of patients who reported >50% relief at various time points after the procedure. For example, at 36 months 70% of patients who responded reported more than 50% relief. For the graph below, this is the mean reported relief at these same time points. For example, patients at 12 months may have reported anything from no relief, to 50% relief, to 90% relief the mean of all of those reports was 55% improved.

This data analysis is part of the fall 2015 data download of patients who were tracked in our advanced registry. For the 2012 version (with fewer patients included), [click here](#), for the 2013 version ([click here](#)) and for the 2014 version ([click here](#)). More information can be found at the links below:

- [How about functional questionnaire data on knees?](#)
- [Decisions that can be made based on our registry data. For example does age or arthritis severity impact outcomes?](#)

Fall 2015 Data

Mean improvement of All Patients



For demographics, N for age calculation was 1825, for BMI 1676. Numbers of patients followed up for outcomes were the following: 763 at 1 month, 964 at 3 months, 789 at 6 months, 542 at 12 months, 321 at 18 months, 192 at 24 months, 84 at 36 months, 37 at 48 months. Expected follow-up Ns (excluding study exits) were: 1728 at 1 month, 1642 at 3 months, 1394 at 6 months, 955 at 12 months, 642 at 18 months, 392 at 24 months, 176 at 36 months, 77 at 48 months.



Regenexx-SD is a same day stem cell procedure where cells are harvested in the morning and placed back in the afternoon.